

“Where are you Going?” Game cards and Instructions

Instructions: For 2-4 players

1. Everyone places their counters in the middle.
2. Throw a die to see who starts first—the highest goes first.
3. Player 1 must say where they are going “E.g. I’m going to the park”. Then s/he rolls the die and moves that number forward - you can start on any circle.
4. Then player 2 rolls and moves.
5. Each player takes turns until they reach their destination. They mustn’t change their decision.
6. On reaching your destination, write your initials in that circle and then pick up your counter and put it back in the center again. Then on your next turn, say where you are going next.
7. In order to win, you must have visited all 8 destinations. The first player to visit all 8 destinations and write their initials in the circles is the winner.
8. If you land at the end of your go on a “?” circle, pick up a card and move according to the instructions. Then put the card at the bottom of the pile.
9. If you land on a circle that another person’s counter is on (even if passing through), you send their counter back to the middle.

<p>?</p> <p>I’m going by bus.</p> <p>Move forward 3.</p>	<p>?</p> <p>I’m going by boat.</p> <p>Move forward 1.</p>	<p>?</p> <p>I’m going by bicycle.</p> <p>Move forward 2.</p>
<p>?</p> <p>I’m going by car.</p> <p>Move forward 3.</p>	<p>?</p> <p>I’m going by airplane.</p> <p>Move forward 5.</p>	<p>?</p> <p>I’m going on foot.</p> <p>Move forward 1.</p>
	<p>?</p> <p>I’m going by train.</p> <p>Move forward 4.</p>	<p>?</p> <p>I’m going by rocket.</p> <p>Move forward 6.</p>

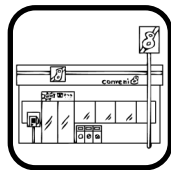
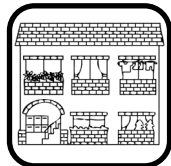
Cut out the above cards 

Where are you going? My name is _____

Where are you going?



I'm going to the beach.



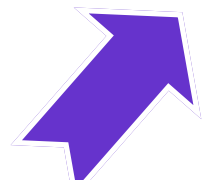
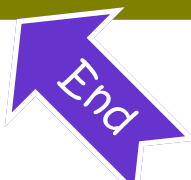
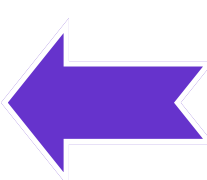
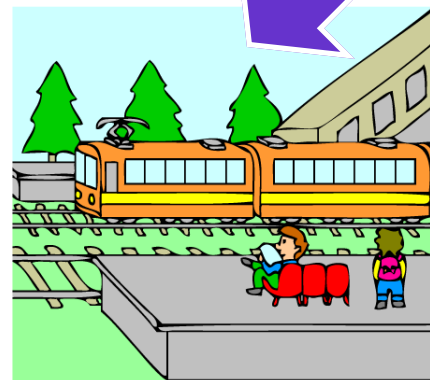
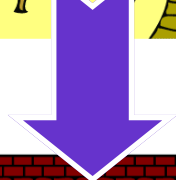
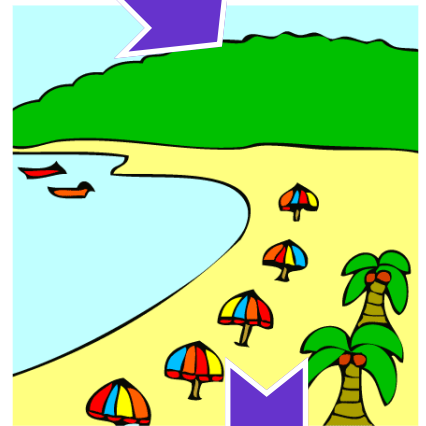
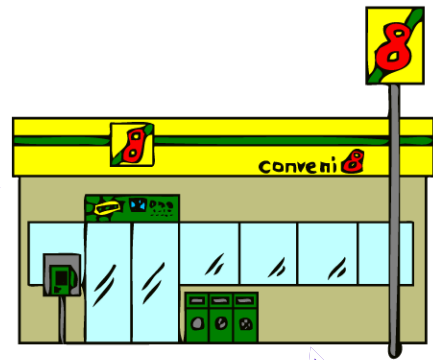
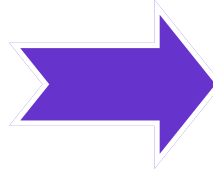
the park
the zoo

the beach
school

home
the station

my friend's house
the shops

Where are you Going?



Where are you Going?

